



Parkview Phase 2 Lots Bluffton
\$69,900



AGENT:

LARRY SMITH

419-230-7158

313 Parkview Dr. \$69,900

LOT SIZE: .252

1/2 YR. TAXES:

(Lot 24 / 1436)

INFORMATION BELIEVED ACCURATE BUT NOT GUARANTEED!



AGENT:

LARRY SMITH

419-230-7158

315 Parkview Dr. \$69,900

LOT SIZE: .189

1/2 YR. TAXES:

(Lot 23 / 1437)

INFORMATION BELIEVED ACCURATE BUT NOT GUARANTEED!



AGENT:

LARRY SMITH

419-230-7158

317 Parkview Dr. \$69,900

LOT SIZE: .161

1/2 YR. TAXES:

(Lot 22 / 1438)

INFORMATION BELIEVED ACCURATE BUT NOT GUARANTEED!



AGENT:

LARRY SMITH

419-230-7158

319 Parkview Dr. \$69,900

LOT SIZE: .161

1/2 YR. TAXES:

(Lot 21 / 1439)

INFORMATION BELIEVED ACCURATE BUT NOT GUARANTEED!



AGENT: LARRY SMITH 419-230-7158

321 Parkview Dr. \$69,900

LOT SIZE: .183

1/2 YR. TAXES:

(Lot 20 / 1440)

INFORMATION BELIEVED ACCURATE BUT NOT GUARANTEED!



AGENT:

LARRY SMITH

419-230-7158

323 Parkview Dr. \$69,900

LOT SIZE: .228

1/2 YR. TAXES:

(Lot 19 / 1441)

INFORMATION BELIEVED ACCURATE BUT NOT GUARANTEED!



AGENT:

LARRY SMITH

419-230-7158

325 Parkview Dr. \$69,900

LOT SIZE: .261

1/2 YR. TAXES:

(Lot 18 / 1457)

INFORMATION BELIEVED ACCURATE BUT NOT GUARANTEED!



AGENT:

LARRY SMITH

419-230-7158

327 Parkview Dr. \$69,900

LOT SIZE: .253

1/2 YR TAXES:

(Lot 17 / 1456)

INFORMATION BELIEVED ACCURATE BUT NOT GUARANTEED!



AGENT:

LARRY SMITH

419-230-7158

329 Parkview Dr. \$69,900

LOT SIZE: .226

1/2 YR. TAXES:

(Lot 16 / 1455)

INFORMATION BELIEVED ACCURATE BUT NOT GUARANTEED!



AGENT:

LARRY SMITH

419-230-7158

331 Parkview Dr. \$69,900

LOT SIZE: .206

1/2 YR. TAXES:

(Lot 15 / 1454)

INFORMATION BELIEVED ACCURATE BUT NOT GUARANTEED!



AGENT:

LARRY SMITH

419-230-7158

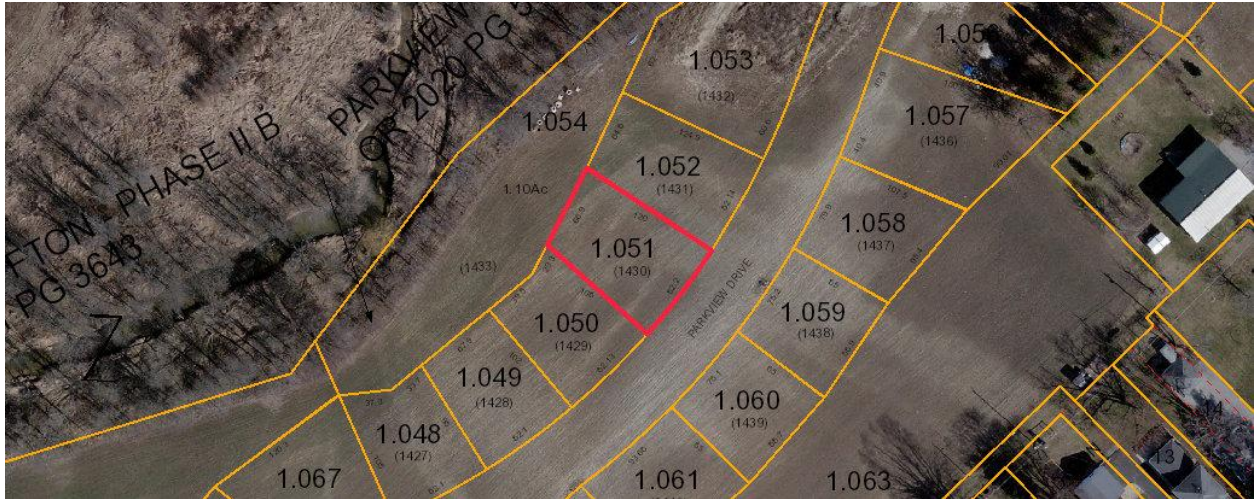
333 Parkview Dr. \$69,900

LOT SIZE: .208

1/2 YR. TAXES:

(Lot 14 / 1453)

INFORMATION BELIEVED ACCURATE BUT NOT GUARANTEED!



AGENT:

LARRY SMITH

419-230-7158

316 Parkview Dr. \$69,900

LOT SIZE: .195

1/2 YR. TAXES:

(Lot 3 / 1430)

INFORMATION BELIEVED ACCURATE BUT NOT GUARANTEED!



AGENT:

LARRY SMITH

419-230-7158

320 Parkview Dr. \$69,900

LOT SIZE: .174

1/2 YR. TAXES:

(Lot 5 / 1428)

INFORMATION BELIEVED ACCURATE BUT NOT GUARANTEED!



AGENT:

LARRY SMITH

419-230-7158

322 Parkview Dr. \$69,900

LOT SIZE: .168

1/2 YR. TAXES:

(Lot 6 / 1427)

INFORMATION BELIEVED ACCURATE BUT NOT GUARANTEED!



AGENT:

LARRY SMITH

419-230-7158

324 Parkview Dr. \$69,900

LOT SIZE: .214

1/2 YR TAXES:

(Lot 7 / 1446)

INFORMATION BELIEVED ACCURATE BUT NOT GUARANTEED!



AGENT:

LARRY SMITH

419-230-7158

326 Parkview Dr. \$69,900

LOT SIZE: .199

1/2 YR TAXES:

(Lot 8 / 1447)

INFORMATION BELIEVED ACCURATE BUT NOT GUARANTEED!